

Cotter Split Pin

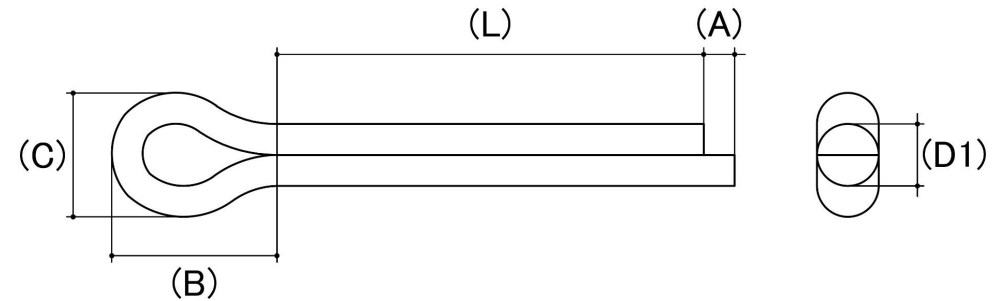
Material: Stainless Steel

Class Grade: A4-70 G316

Corrosion Protection Level: Ultimate

Standard: DIN 94

Comments: Cotter pin diameter \diamond is to suit hole size



*Cad Drawings shown for graphic representation only.**

Size	Pin Diameter (D) (mm)		Eye Diameter (C) (mm)		Eye Length (B) (mm)	Prong Length (A) (mm)		Hole Size To Suit (mm)	sku (Part Number)
	Min	Max	Min	Max	Nom	Min	Max	Nom	
M1	0.70	0.90	1.65	1.90	1.80	1.10	1.50	1.00	37S1M
M1.6	1.30	1.40	2.40	2.80	3.20	1.30	2.50	1.60	37S1.6M
M2.5	2.10	2.30	4.00	4.60	5.00	1.30	2.50	2.50	37S2.5M
M3.2	2.70	2.90	5.10	5.80	6.40	1.60	3.20	3.20	37S3.2M
M4	3.50	3.70	6.50	7.40	8.00	2.00	4.00	4.00	37S4M
M5	4.40	4.60	8.00	9.20	10.00	2.00	4.00	5.00	37S5M
M6.3	5.70	5.90	10.30	11.80	12.60	2.00	4.00	6.30	37S6.3M
M8	7.30	7.50	13.10	15.00	16.00	2.00	4.00	8.00	37S8M
M10	9.30	9.50	16.60	19.00	20.00	3.15	6.30	10.00	37S10M

Disclaimer:

Dimensional data and technical information was obtained from publically available sources and not acquired through standard agencies. It has been completed and compiled for reference purposes only; where discrepancies are found they are subject to change without notice. Bolt & Nut Australia makes no warranties or representations regarding the accuracy and validity of the compiled information and data. Contact the relevant standard authorities for accurate and detailed information.

* Cad Drawings may not reflect diameter, thread length or overall length.

© Bolt & Nut Australia Pty Ltd. All rights reserved.

Version: 31 Oct 2024